

Specifications	Nozzle diameter	Fluid Cup Capacity
Ref. 6323	0,5mm	2ml / 5ml / 13ml

HOW TO AIRBRUSH

- 1.- Fill fluid in the cup after thinning appropriately.
- 2.- Hold the airbrush lightly in your hand.
- 3.- By pressing the main lever, a stream of air emerges. Then draw it backward gradually for color atomization.
- 4.- For fine line spray, remove the needle cover and hold the air brush near a work surface
- 5.- The spray pattern is in accordance with the distance between a work surface and a air brush.

MAINTENANCE

Empty the fluid cup and wash with water or solvent by a brush.

Refill cup with water or solvent, then block the needle cover with a finger and spray. The air flows backward into nozzle to clean the paints remaine the air brush.

CLEANING THE AIRBRUSH

It's important that the airbrush is cleaned immediately after each use and not allow the colour to dry in it. Not cleaning the airbrush will cause a blockage in the operating mechanism and shorten the usefulness of the airbrush. The airbrush will also need to be cleaned each time the colour is changed.

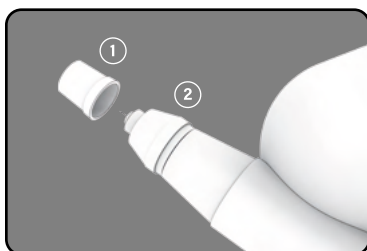
QUICK PAINT FLUSH BETWEEN COLOUR CHANGES

When using acrylic paints, you should clean your airbrush regularly before the paint dries between colour changes with a quick paint flush. The airbrush should be cleaned by filling the bowl with clean water and dumping out excess paint from the colour cup, repeating the process until it sprays clear. Help yourself with an old synthetic brush to clean the inside of the paint bowl.

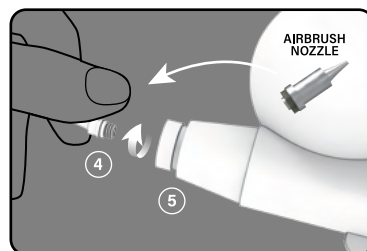
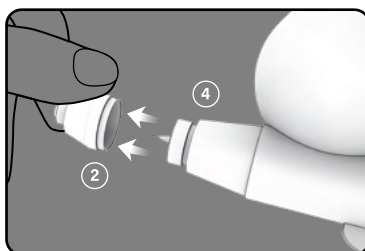
Alternate between using the GSW Airbrush cleaner and water, and then wipe the paint cup out with a paper towel.

DEEP CLEANING OF THE AIRBRUSH AT THE END OF THE PAINT SESSION

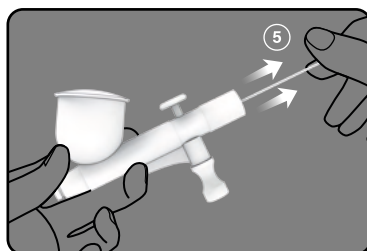
If you want to carry out a thorough cleaning, in addition to performing the above procedure, it is advisable to partially disassemble the airbrush to reach needle (5), nozzle (4) and other inner parts, as follow:



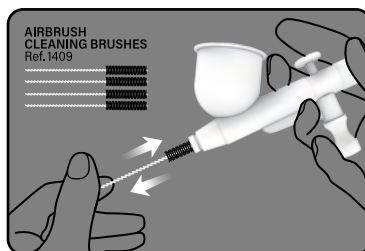
Disassemble Needle cap (1), Nozzle cap (2), and back handle (16), as well as loosen the needle chucking nut (15).



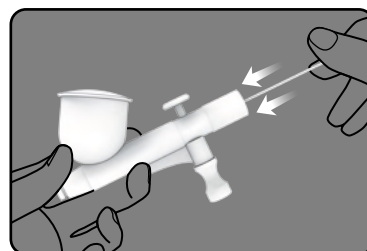
The nozzle (4) should be carefully cleaned inside. Use the nozzle wrench (5) to disassemble it. Take into account that overtightening the nozzle could cause sudden breakage.



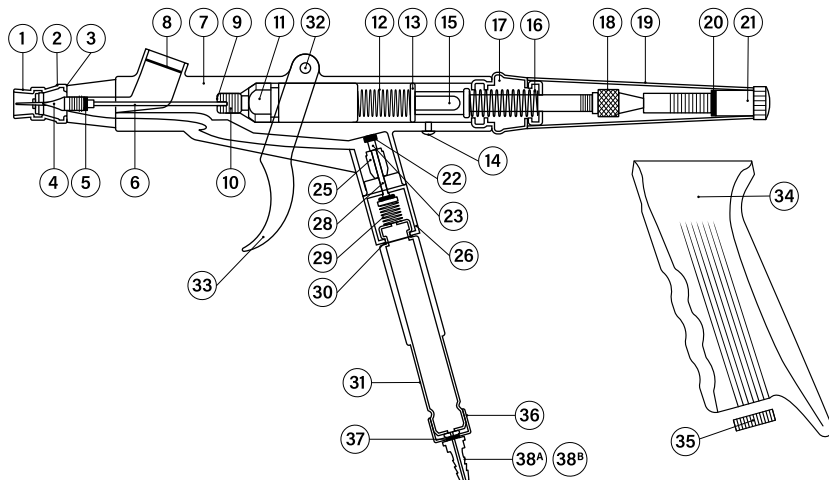
Pull the needle (5) out. Clean the needle with a small amount of Airbrush Cleaner by wiping only towards the sharp needlepoint. Only wipe the needle in a back-to-front direction so as not to puncture yourself. Needles are extremely sharp and delicate.



The inside of the airbrush body must be also cleaned with clean water or paint remover. Using airbrush nozzle cleaning wires up into the main body, push deep toward the back of the airbrush. Scrub back and forth, twisting in and out. Repeat until there is no paint debris on the brush.



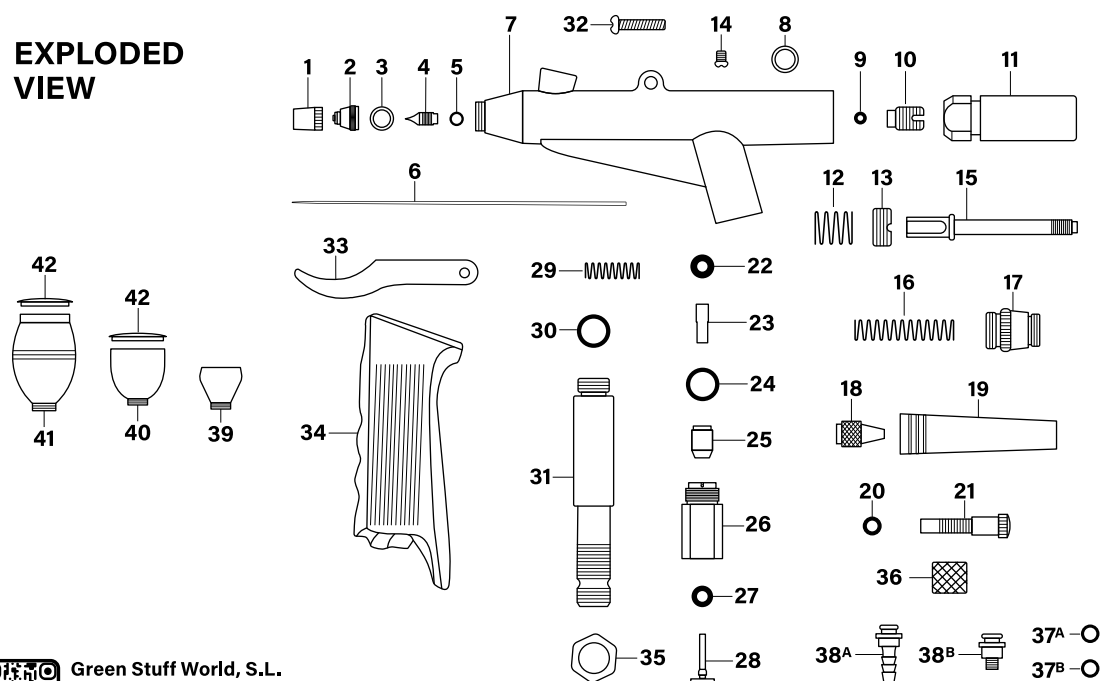
Reassemble the airbrush and verify that it works correctly without obstructions, for example, spraying clean water or thinner.



PARTS NAME

1. Needle Cap	12. Spring	23. Shaft	34. Plastic Handle
2. Nozzle Cap	13. Stopper	24. O-Ring	35. Hex Nut
3. O-Ring For Nozzle Cap	14. Guide Screw	25. Hex Nut	36. Hose Connector Nut
4. Nozzle	15. Needle Chucking Guide	26. Valve Seat	37. O-Ring For Hose Connector
5. O-Ring	16. Spring	27. Valve O-Ring	38. Hose ConnectorS
6. Needle	17. Spring Case	28. Valve Rod	39. 2ml Color Cup
7. Main Body	18. Needle Chucking Nut	29. Valve Spring	40. 5ml Color Cup
8. O-Ring	19. Handle	30. Valve O-Ring	41. 13ml Color Cup
9. O-Ring For Needle Guide	20. O-Ring	31. Valve Body	42. Lid For Color Cup X2
10. Needle Guide	21. Adjusting Screw	32. Guide Screw	43. Nozzle Spanner
11. Slippery Valve	22. Lever Guide O-Ring	33. Lever Handle	

EXPLODED VIEW



Green Stuff World, S.L.
Calle Chelín, 24 - Pol. Las Atalayas, Alicante 03114 - Spain.
Tel: +34 965 14 51 07 - support@greenstuffworld.com

