

RUST TEXTURES



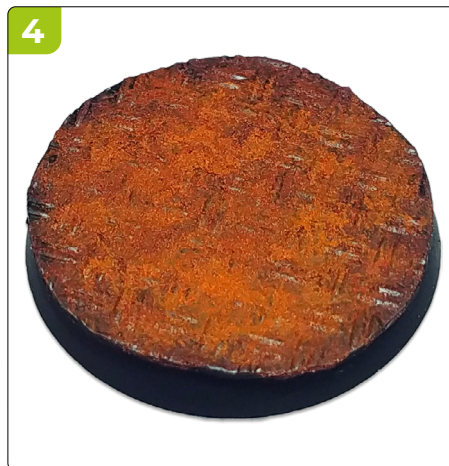
1. Texturized plasticard base, primed with Matt Black.



2. Coat of Dark Oxide Rust.



3. Coat of Red Oxide Rust, slightly diluted.



4. Coat of Medium Oxide Rust, also diluted.



5. Small and dispersed stains of Light Oxide Rust.



6. Carefully drybrush with Gunmetal Grey on the outer zones.



7. Apply a Soft Coat of drybrushed Matt Black all over the base.



8. Add small stains with Verdigris Rust to create some color contrast.

RUST TEXTURES



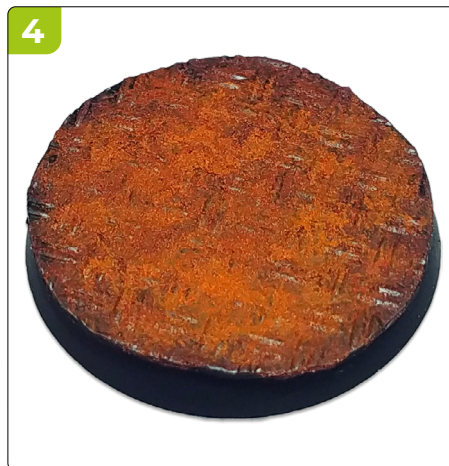
1. Base de Plasticard texturizado, imprimada en negro mate.



2. Capa de Dark Oxide Rust.



3. Capa de Red Oxide Rust, ligeramente diluida.



4. Capa de Medium Oxide Rust, también diluida.



5. Pequeñas manchas dispersas de Light Oxide Rust.



6. Aplicar pincel seco con Gunmetal Grey en las zonas más externas.



7. Aplicar pincel seco muy suave con negro mate en toda la peana.



8. Añadir pequeñas manchas de Verdigris Rust para sumar contraste.